



Toyota RAV4
Standard Safety Equipment

2019



Adult Occupant



93%

Child Occupant



87%

Vulnerable Road Users



85%

Safety Assist



77%

SPECIFICATION

Tested Model	Toyota RAV4 Hybrid AWD, LHD
Body Type	- 5 door SUV
Year Of Publication	2019
Kerb Weight	1730kg
VIN From Which Rating Applies	- all RAV4s
Class	Small Off-Road

SAFETY EQUIPMENT

	Driver	Passenger	Rear
FRONTAL CRASH PROTECTION			
Frontal airbag	●	●	✘
Belt pretensioner	●	●	●
Belt loadlimiter	●	●	●
Knee airbag	●	✘	✘
SIDE CRASH PROTECTION			
Side head airbag	●	●	●
Side chest airbag	●	●	✘
Side pelvis airbag	●	●	✘

Version 041019

SAFETY EQUIPMENT (NEXT)

	Driver	Passenger	Rear
CHILD PROTECTION			
Isofix	—	✗	●
Integrated CRS	—	✗	✗
Airbag cut-off switch	—	●	—
SAFETY ASSIST			
Seat Belt Reminder	●	●	●

OTHER SYSTEMS	
Active Bonnet (Hood)	✗
AEB Pedestrian	●
AEB Cyclist	●
AEB City	●
AEB Inter-Urban	●
Speed Assistance System	●
Lane Assist System	●

Note: Other equipment may be available on the vehicle but was not considered in the test year.

- Fitted to the vehicle as standard
- Fitted to the vehicle as part of the safety pack
- Not fitted to the test vehicle but available as option or as part of the safety pack
- ✗ Not available
- Not applicable

ADULT OCCUPANT

Total 35.7 Pts / 93%

■ GOOD
 ■ ADEQUATE
 ■ MARGINAL
 ■ WEAK
 ■ POOR

Frontal Offset Deformable Barrier 7.4 / 8 Pts

Passenger Driver

Frontal Full Width 7.5 / 8 Pts

Rear Passenger Driver

Whiplash Rear Impact 1.7 / 2 Pts

Front seat Rear seat

Lateral Impact 15 / 16 Pts

Car Pole

 ADULT OCCUPANT

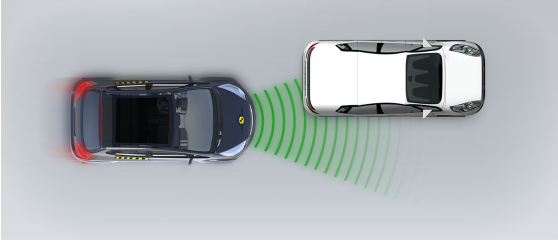
Total 35.7 Pts / 93%

 GOOD  ADEQUATE  MARGINAL  WEAK  POOR

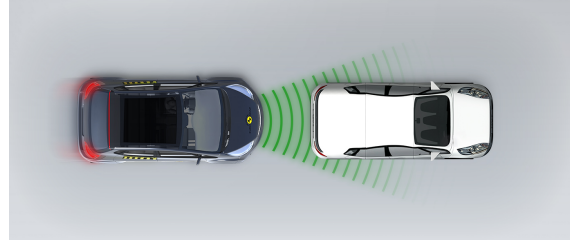
AEB City

 4 / 4 Pts

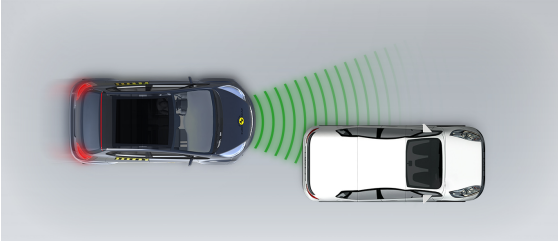
Approaching a stationary car: Left Offset



Approaching a stationary car: No Offset



Approaching a stationary car: Right Offset



 ADULT OCCUPANT

Total 35.7 Pts / 93%

Comments

The passenger compartment of the RAV4 remained stable in the frontal offset test. Dummy readings indicated good protection of the knees and femurs of the driver and passenger. Toyota showed that a similar level of protection would be provided to occupants of different sizes and to those sitting in different positions. In the full-width rigid barrier test, protection of critical body areas was good or adequate for both the driver and rear passenger. In the side barrier test, dummy readings indicated good protection of all critical body areas. The same was true of the more severe side pole test, but the curtain airbag caught on part of the interior trim and was judged not to have deployed correctly. As a result, protection of the head was down-graded from good to adequate in both the side impact tests. Tests on the front seats and head restraints demonstrated good protection against whiplash injury in the event of rear-end collision. A geometric assessment of the rear seats also indicated good whiplash protection. The standard-fit autonomous emergency braking (AEB) system scored full points in tests of its functionality at low speeds, typical of city driving, with collisions avoided in all scenarios.

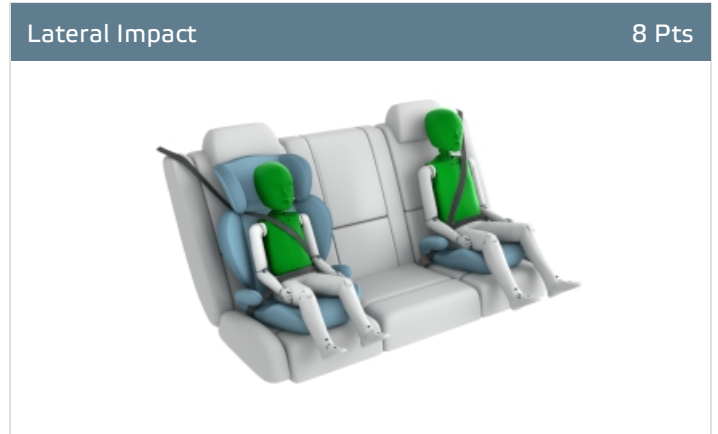
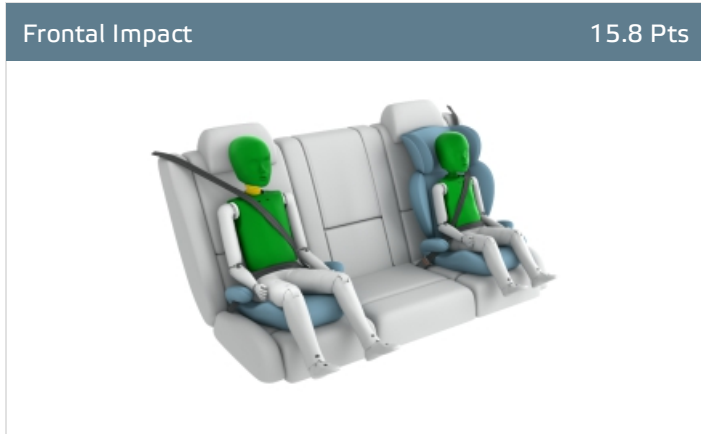
CHILD OCCUPANT

Total 42.8 Pts / 87%

GOOD
 ADEQUATE
 MARGINAL
 WEAK
 POOR

Crash Test Performance based on 6 & 10 year old children

23.8 / 24 Pts



Restraint for 6 year old child: *TOYOTA KIDFIX XP SICT*
 Restraint for 10 year old child: *Booster Cushion*

Safety Features

7 / 13 Pts

	Front Passenger	2nd row outboard	2nd row center
Isifix	✘	●	✘
i-Size	✘	●	✘
Integrated CRS	✘	✘	✘

Fitted to test car as standard
 Not on test car but available as option
 ✘ Not available

CRS Installation Check

12 / 12 Pts

● Install without problem
 ● Install with care
 ● Safety critical problem
 ✗ Installation not allowed

■ i-Size CRS

Maxi Cosi 2way Pearl & 2wayFix (rearward) (iSize)



Maxi Cosi 2way Pearl & 2wayFix (forward) (iSize)



BeSafe iZi Kid X2 i-Size (iSize)



BeSafe iZi Flex FIX i-Size (iSize)



■ ISOFIX CRS

Maxi Cosi Cabriofix & FamilyFix (ISOFIX)



BeSafe iZi Kid X4 ISOfix (ISOFIX)




Britax Römer Duo Plus (ISOFIX)



Britax Römer KidFix XP (ISOFIX)



 CHILD OCCUPANT

Total 42.8 Pts / 87%

■ Universal Belted CRS

Maxi Cosi Cabriofix (Belt)



Maxi Cosi Cabriofix & EasyBase2 (Belt)



Britax Römer King II LS (Belt)



Britax Römer KidFix XP (Belt)



CHILD OCCUPANT

Total 42.8 Pts / 87%

	Seat Position			
	Front	2nd row		
	PASSENGER	LEFT	CENTER	RIGHT
Maxi Cosi 2way Pearl & 2wayFix (rearward) (iSize)	□	●	□	●
Maxi Cosi 2way Pearl & 2wayFix (forward) (iSize)	□	●	□	●
BeSafe iZi Kid X2 i-Size (iSize)	□	●	□	●
BeSafe iZi Flex FIXi-Size (iSize)	□	●	□	●
Maxi Cosi Cabriofix & FamilyFix (ISOFIX)	□	●	□	●
BeSafe iZi Kid X4 ISOfix (ISOFIX)	□	●	□	●
Britax Römer Duo Plus (ISOFIX)	□	●	□	●
Britax Römer KidFix XP (ISOFIX)	□	●	□	●
Maxi Cosi Cabriofix (Belt)	●	●	●	●
Maxi Cosi Cabriofix & EasyBase2 (Belt)	●	●	●	●
Britax Römer King II LS (Belt)	●	●	●	●
Britax Römer KidFix XP (Belt)	●	●	●	●

● Install without problem
 ● Install with care
 ● Safety critical problem
 ✘ Installation not allowed

Comments

In the frontal offset test, protection was good or adequate for all critical body areas of both the 6 and 10 year dummies. In the side barrier test, maximum points were scored with all body regions well protected. The front passenger airbag can be disabled to allow a rearward-facing child restraint to be used in that seating position. Clear information is provided to the driver regarding the status of the airbag and the system was rewarded. All of the restraint types for which the RAV4 is designed could be properly installed and accommodated in the car.

VULNERABLE ROAD USERS

Total 40.9 Pts / 85%

■ GOOD
 ■ ADEQUATE
 ■ MARGINAL
 ■ WEAK
 ■ POOR

Pedestrian	29.6 / 36 Pts						
	<table border="1" style="width: 100%; border-collapse: collapse;"> <tr> <td style="padding: 5px;">Head Impact</td> <td style="text-align: right; padding: 5px;">17.6 Pts</td> </tr> <tr> <td style="padding: 5px;">Pelvis Impact</td> <td style="text-align: right; padding: 5px;">6 Pts</td> </tr> <tr> <td style="padding: 5px;">Leg Impact</td> <td style="text-align: right; padding: 5px;">6 Pts</td> </tr> </table>	Head Impact	17.6 Pts	Pelvis Impact	6 Pts	Leg Impact	6 Pts
Head Impact	17.6 Pts						
Pelvis Impact	6 Pts						
Leg Impact	6 Pts						

Vulnerable Road Users	11.3 / 12 Pts
System Name	Pre-Collision System as part of Toyota Safety Sense
Type	Auto-Brake with Forward Collision Warning
Operational From	10 km/h

Comments

The protection provided by the bonnet to the head of a struck pedestrian was good or adequate over almost the entire surface. The bumper provided good protection to pedestrians' legs at all test locations, and maximum points were also scored for protection of the pelvis. The AEB system of the RAV4 can detect vulnerable road users as well as other vehicles, and performed well in tests of its reaction to pedestrians and to cyclists.

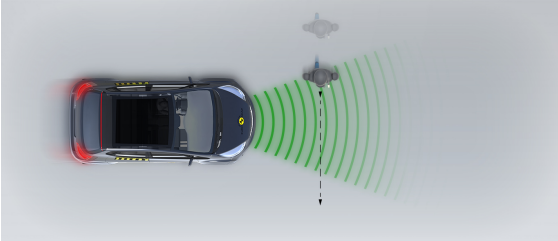
 VULNERABLE ROAD USERS

Total 40.9 Pts / 85%

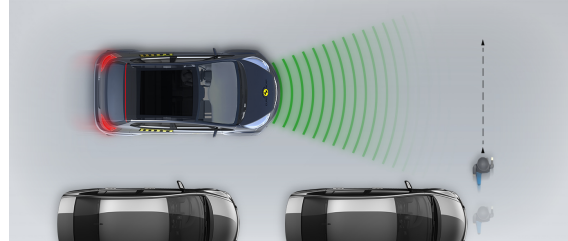
AEB Pedestrian 

■ Day time

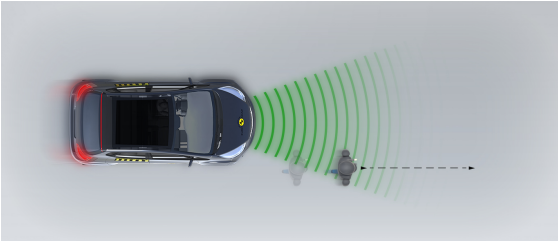
Adult crossing the road



Child running from behind parked vehicles



Adult along the roadside

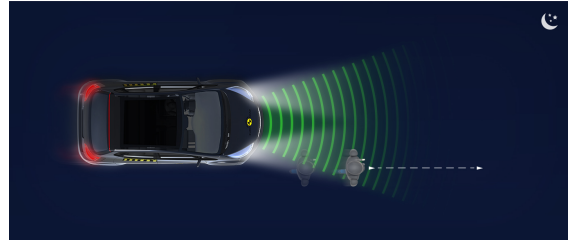


■ Night time

Adult crossing the road

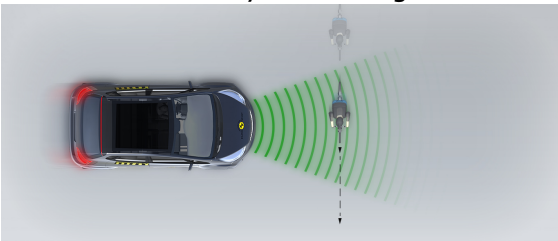


Adult along the roadside

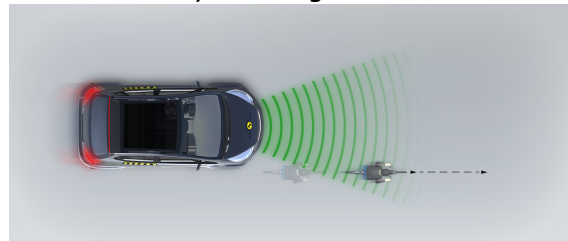


AEB Cyclist 

Cyclist crossing



Cyclist along the roadside



SAFETY ASSIST

Total 10.1 Pts / 77%

■ GOOD
 ■ ADEQUATE
 ■ MARGINAL
 ■ WEAK
 ■ POOR

Speed Assistance

■ 2.4 / 3 Pts

System Name	Dynamic Radar Cruise Control with Road Sign Assist as part of Toyota Safety Sense
Speed Limit Information Function	Camera based
Speed Limitation Function	System advised (accurate to 5km/h)

Seat Belt Reminder

■ 3 / 3 Pts

Applies To	Not available		
	Driver Seat	front passenger(s)	rear passenger(s)
Warning			
Visual	●	●	●
Audible	●	●	●
Occupant detection	—	●	●

● Pass
 ● Fail
 — Not available

Lane Support

■ 2.3 / 4 Pts

System Name	Lane Departure Alert with steering control as part of Toyota Safety Sense
Type	LKA (including LDW)
Operational From	50 km/h

PERFORMANCE	
Lane Keep Assist	■ GOOD
Human Machine Interface	■ ADEQUATE

SAFETY ASSIST

Total 10.1 Pts / 77%

AEB Inter-Urban

2.4 / 3 Pts

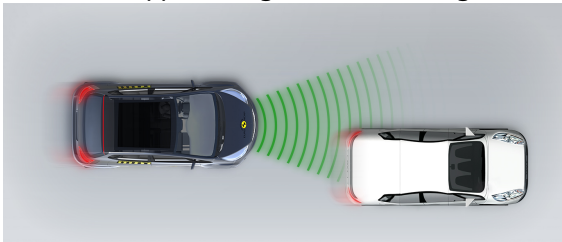
System Name	Pre-Collision System as part of Toyota Safety Sense
Type	Autonomous Emergency Braking and Forward Collision Warning
Operational From	10 km/h

Comments

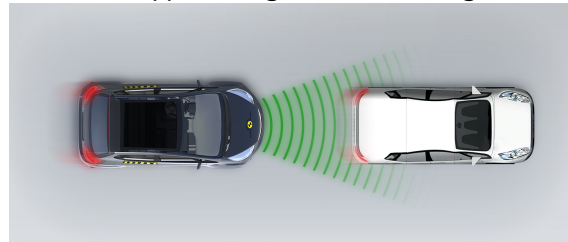
The RAV4 has a seatbelt reminder system for the front and rear seats as standard. The speed assistance system uses a camera to determine the local speed limit. The limit is presented to the driver and offers the opportunity to set the limiter to the speed shown. The lane support system helps to prevent inadvertent drifting out of lane, and also intervenes in some more critical situations. In tests of its functionality at highway speeds, the AEB system performed well, with collisions avoided or mitigated in almost all scenarios.

■ Autobrake function only

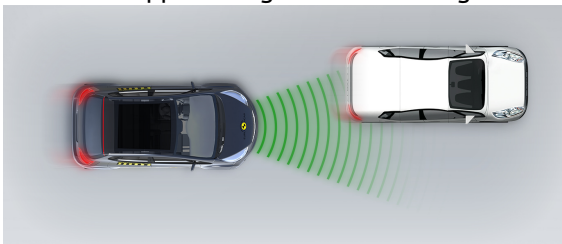
Approaching a slower moving car



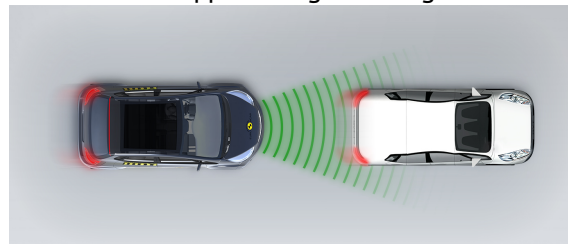
Approaching a slower moving car



Approaching a slower moving car



Approaching a braking car

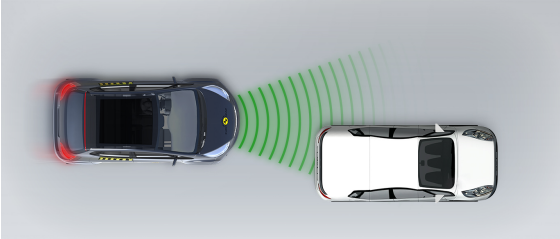


 SAFETY ASSIST

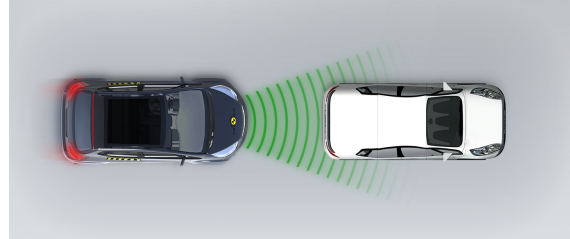
Total 10.1 Pts / 77%

■ Driver reacts to warning

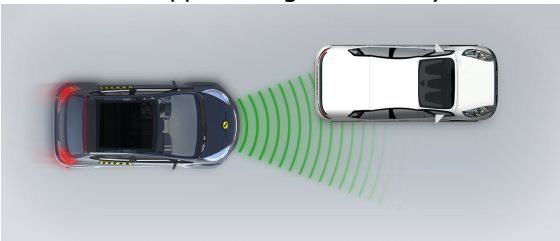
Approaching a stationary car



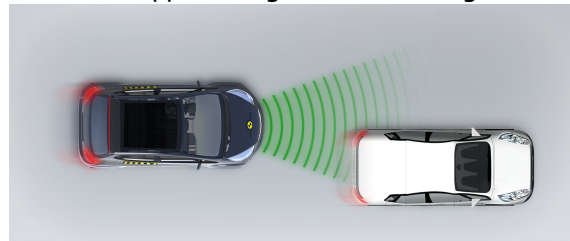
Approaching a stationary car



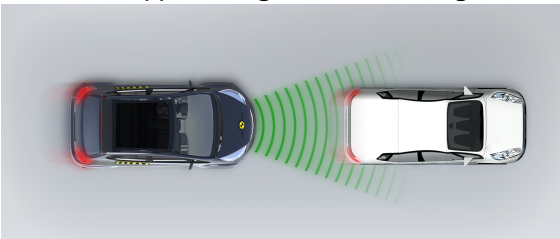
Approaching a stationary car



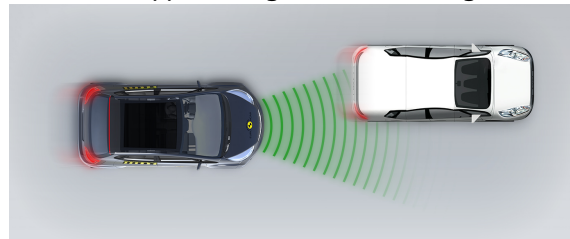
Approaching a slower moving car



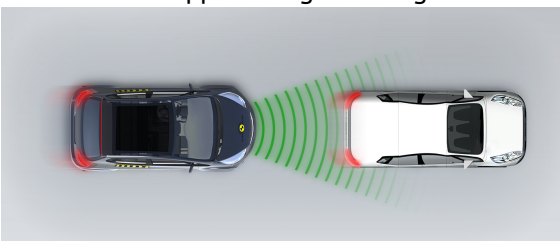
Approaching a slower moving car



Approaching a slower moving car



Approaching a braking car



RATING VALIDITY

Variants of Model Range

Body Type	Engine & Transmission	Drivetrain	Rating Applies	
			LHD	RHD
5 door SUV	2.5l petrol hybrid	4 x 2	✓	✓
5 door SUV	2.5l petrol hybrid	4 x 4*	✓	✓
5 door SUV	2.0l petrol	4 x 2	✓	✓
5 door SUV	2.0l petrol	4 x 4	✓	✓

* Tested variant

Annual Reviews and Facelifts

Date	Event	Outcome
May 2019	Rating Published	2019 ★ ★ ★ ★ ★ ✓